



### J3 : JTAG

NUM	NAME	NUM	NAME
1	TMS	8	GND
2	TRSTW	9	TCK-RET
3	TDI	10	GND
4	GND	11	TCK
5	VCC(5V)	12	GND
6	N.C	13	EMU0
7	TDO	14	EMU1

\* VCC(5번핀)

- 5V : R23(0R), R22(N.C)
- 3.3V : R23(N.C), R22(0R)

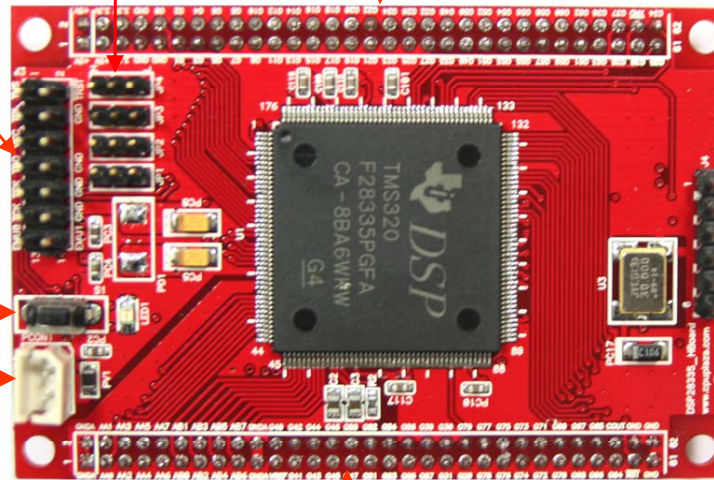
PCON1 : DC 전원 입력

NUM	NAME
1	DC5V
2	GND

RESET  
S/W

JP1,2,3,4  
Boot Mode

J2: CPU핀 확장



J1: CPU핀 확장

J4: UART0(TTL-232)

NUM	NAME
1	VCC(3.3V)
2	RXD
3	TXD
4	RSTW
5	XA12
6	GND

\* VCC(1번핀)

- 5V : PR20(0R), PR21(N.C)
- 3.3V : PR20(N.C), PR21(0R)

J1 : I/O 확장

NUM	NAME
1	아나로그 GND
2	
3	ADCINA0
4	ADCINA1
5	ADCINA2
6	ADCINA3
7	ADCINA4
8	ADCINA5
9	ADCINA6
10	ADCINA7
11	ADCINB0
12	ADCINB1
13	ADCINB2
14	ADCINB3
15	ADCINB4
16	ADCINB5
17	ADCINB6
18	ADCINB7
19	아나로그 GND
20	

NUM	NAME
21	Vref
22	GPIO40
23	GPIO41
24	GPIO42
25	GPIO43
26	GPIO44
27	GPIO45
28	GPIO46
29	GPIO47
30	GPIO80
31	GPIO81
32	GPIO82
33	GPIO83
34	GPIO84
35	GPIO85
36	GPIO86
37	GPIO87
38	GPIO39
39	GPIO31
40	GPIO30

NUM	NAME
41	GPIO29
42	GPIO79
43	GPIO78
44	GPIO77
45	GPIO76
46	GPIO75
47	GPIO74
48	GPIO73
49	GPIO72
50	GPIO71
51	GPIO70
52	GPIO69
53	GPIO68
54	GPIO67
55	GPIO66
56	GPIO65
57	GPIO64
58	CLKOUT
59	RSTW
60	디지털 GND
61	
62	

## J2 : I/O 확장

NUM	NAME
1	DC5V (입력 or 출력)
2	
3	
4	DC3.3V (출력)
5	
6	
7	디지털 GND
8	
9	
10	GPIO0
11	GPIO1
12	GPIO2
13	GPIO3
14	GPIO4
15	GPIO5
16	GPIO6
17	GPIO7
18	GPIO8
19	GPIO9
20	GPIO10

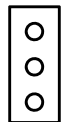
NUM	NAME
21	GPIO11
22	GPIO12
23	GPIO13
24	GPIO14
25	GPIO15
26	GPIO16
27	GPIO17
28	GPIO18
29	GPIO19
30	GPIO20
31	GPIO21
32	GPIO22
33	GPIO23
34	GPIO24
35	GPIO25
36	GPIO26
37	GPIO27
38	GPIO32
39	GPIO33
40	GPIO48

NUM	NAME
41	GPIO49
42	GPIO50
43	GPIO51
44	GPIO52
45	GPIO53
46	GPIO54
47	GPIO55
48	GPIO56
49	GPIO57
50	GPIO58
51	GPIO59
52	GPIO60
53	GPIO61
54	GPIO62
55	GPIO63
56	GPIO36
57	GPIO28
58	GPIO37
59	GPIO38
60	XRDW
61	GPIO35
62	GPIO34

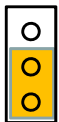
JP1,2,3,4 : Boot Mode 설정

MODE	JP4(GPIO87/XA15)	JP3(GPIO86/XA14)	JP2(GPIO85/XA13)	JP1(GPIO84/XA12)
Jump to Flash(출하시)	1	1	1	1
SCI-A boot	1	1	1	0
SPI-A boot	1	1	0	1
I2C-A boot	1	1	0	0
eCAN-A boot	1	0	1	1
McBSP-A boot	1	0	1	0
Jump to XINTF x16	1	0	0	1
Jump to XINTF x32	1	0	0	0
Jump to OTP	0	1	1	1
Parallel GPIO I/O boot	0	1	1	0
Parallel XINTF boot	0	1	0	1
Jump to SRAM	0	1	0	0
Branch to check boot mode	0	0	1	1
Branch to Flash,skip ADC CAL	0	0	1	0
Branch to SARAM, skip ADC CAL	0	0	0	1
Branch to SCI, skip ADC CAL	0	0	0	0

JPn



1(On)



0(Off)