

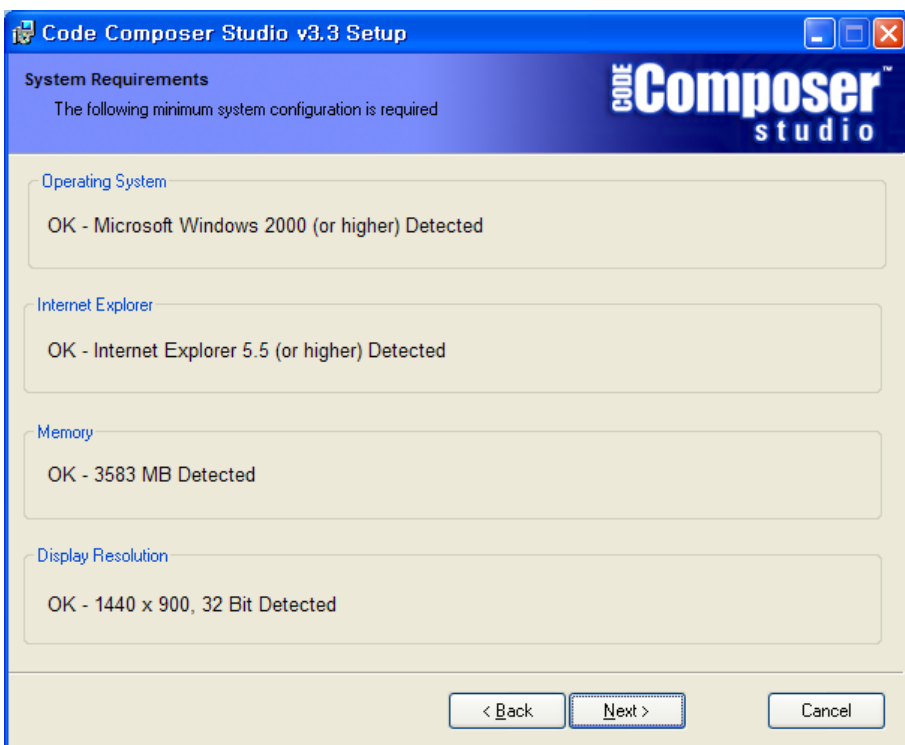
* CCS3.3 Compiler 설치

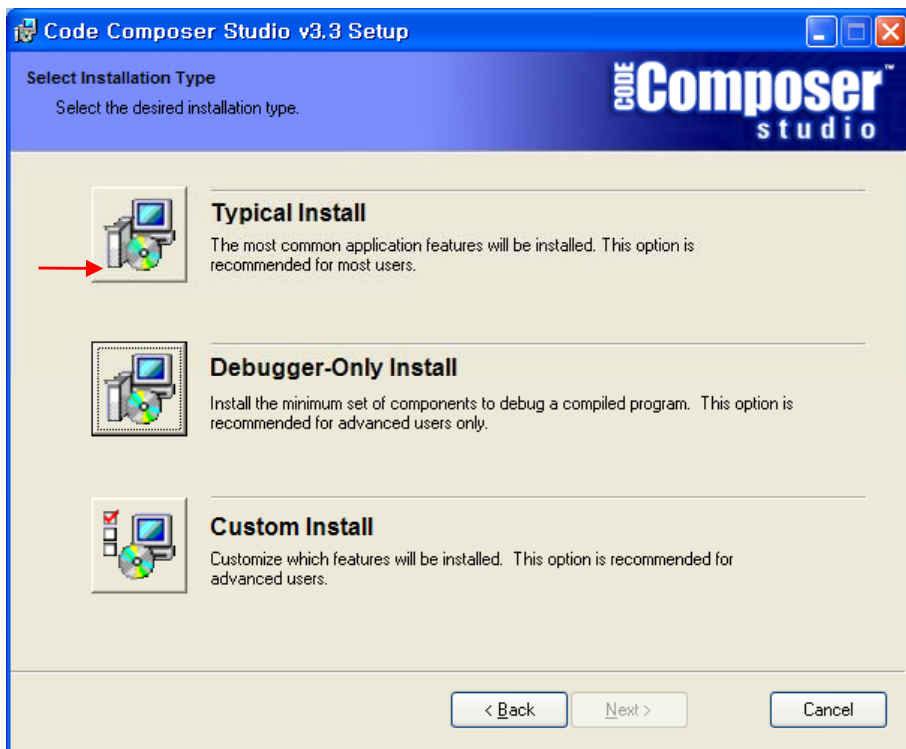
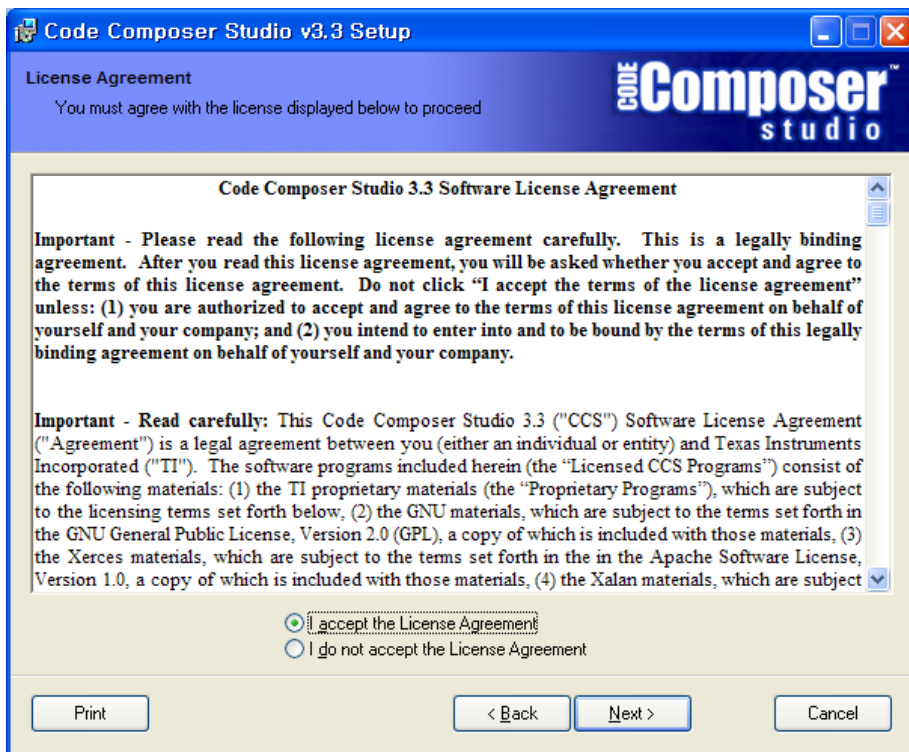
* C2000시리즈 개발에 필요한 TOOL(CCS3.3설치후 HELP->Update Advisor->Check for Update)

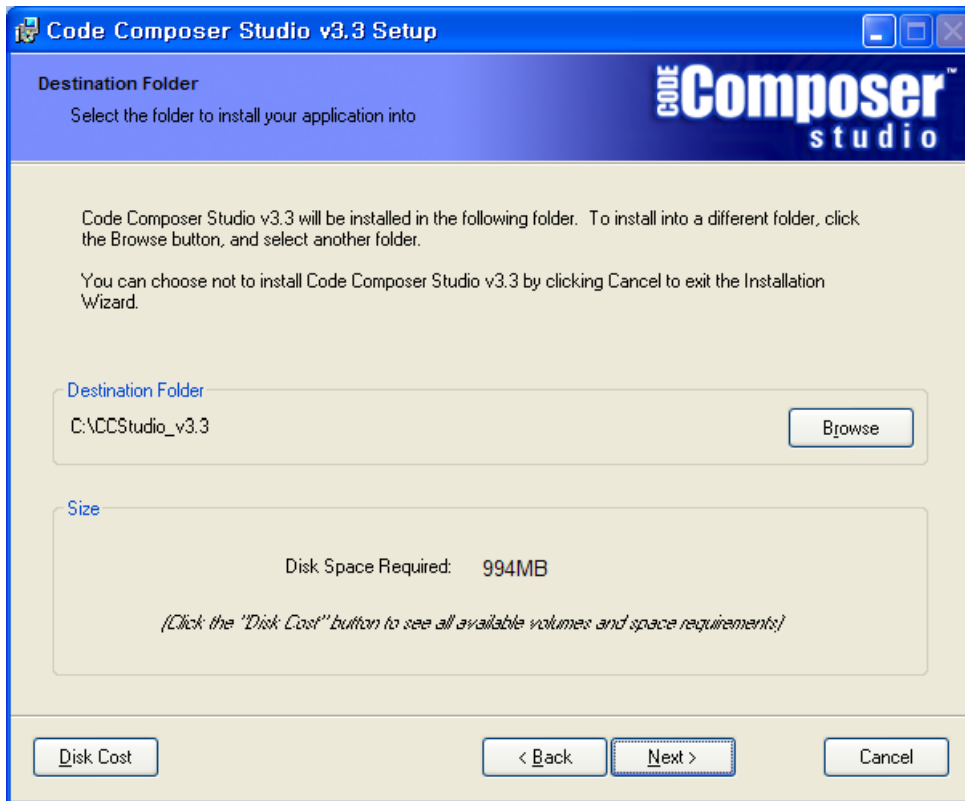
1. Code Composer Studio3.3
 2. Code Composer Studio V3.3 Service Release x.x.xx.xx.x(80이상버전)
 3. Chip Support Package (F2823x RevA)
 4. Updta File setup_C28XFPU_CSP
 5. C2000 Code Generation TOOL(Run-Time Library) :: 버전에 따라 2번 항목에 포함 되어 있음.
 6. SRC530 예제프로그램
1. 아래 TI HOME 페이지에서 무료(120일)버전을 다운 받는다.
 - <http://focus.ti.com/dsp/docs/dspsupportaut.tsp?sectionId=3&tabId=416&familyId=44&toolTypeId=30>
 2. 다운 받은 setup.exe를 실행 합니다.



3. 아래와 같이 순서대로 설치 합니다.(설치후 재부팅 권장)



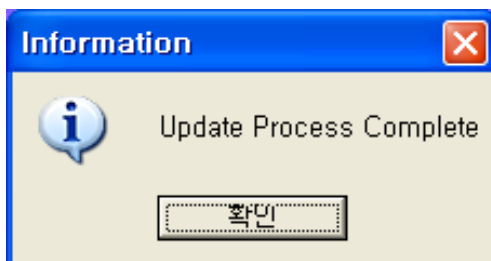
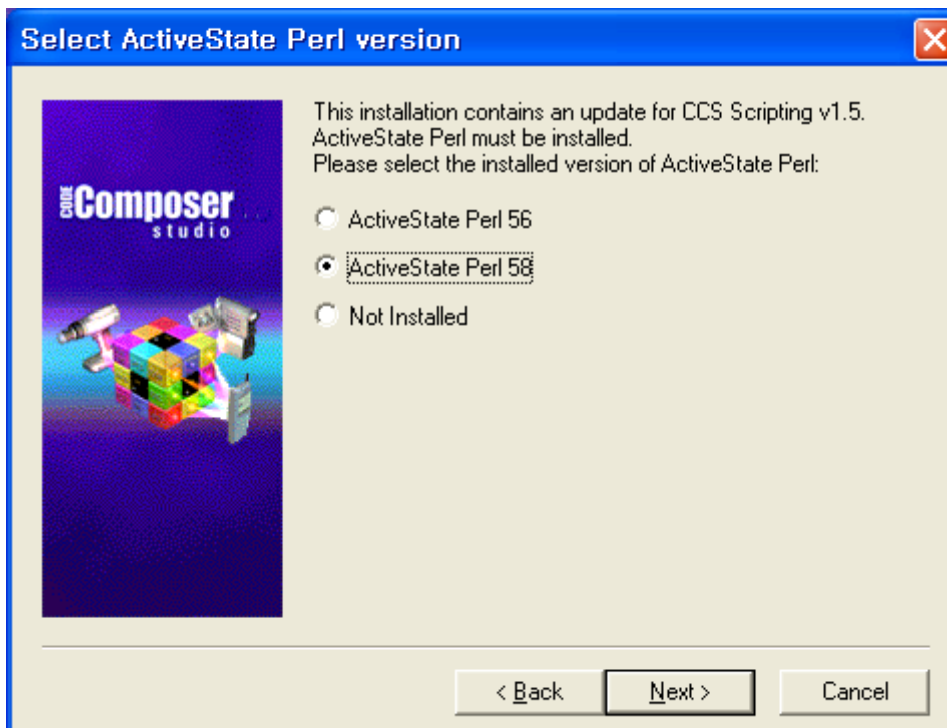
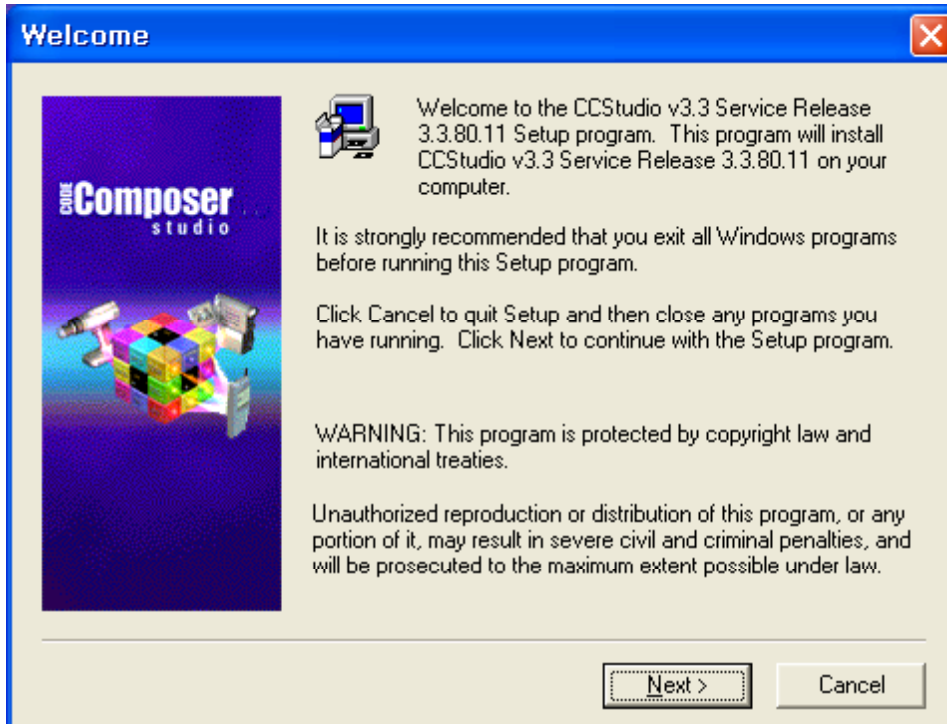


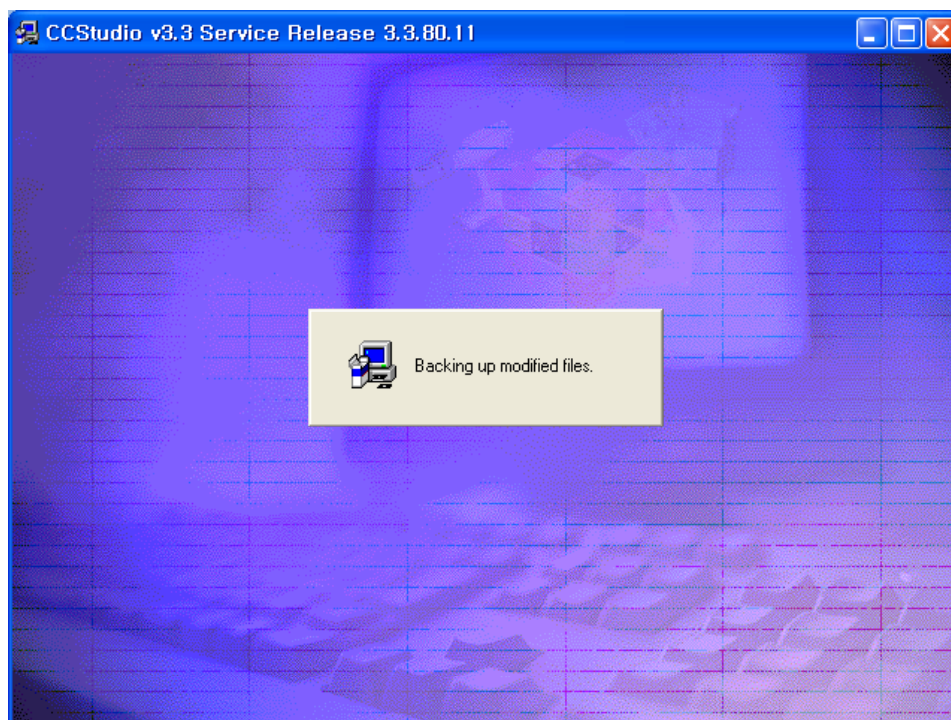
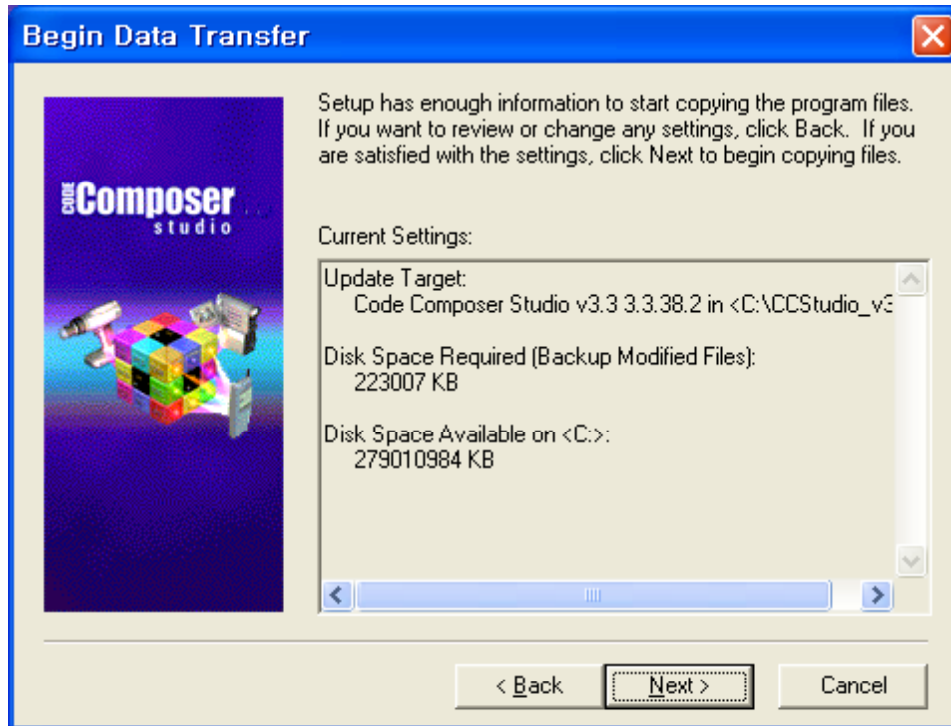




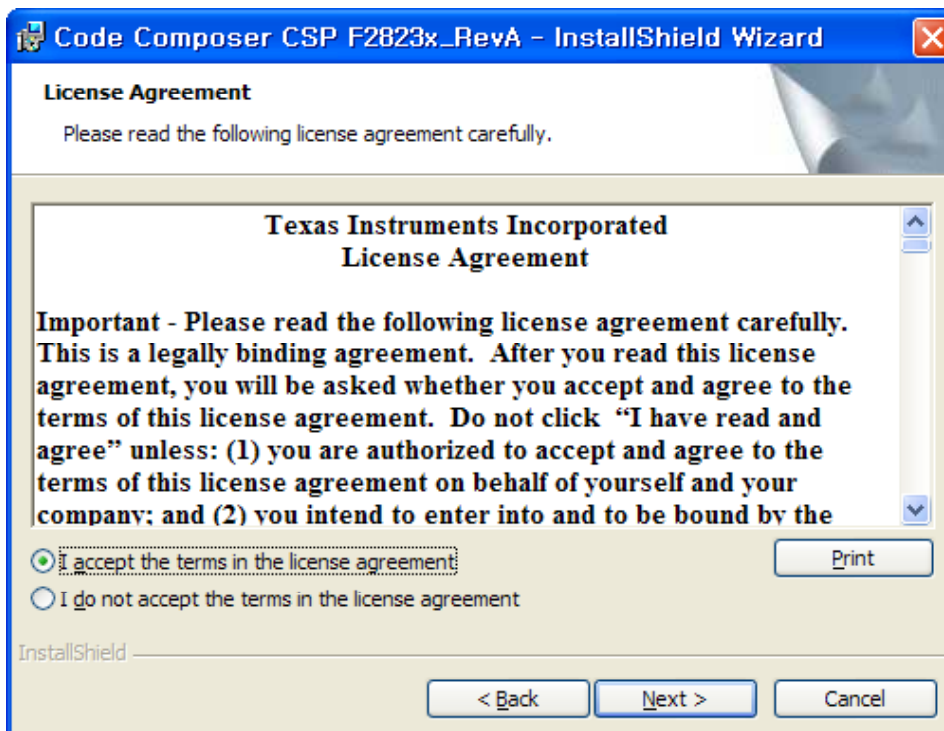
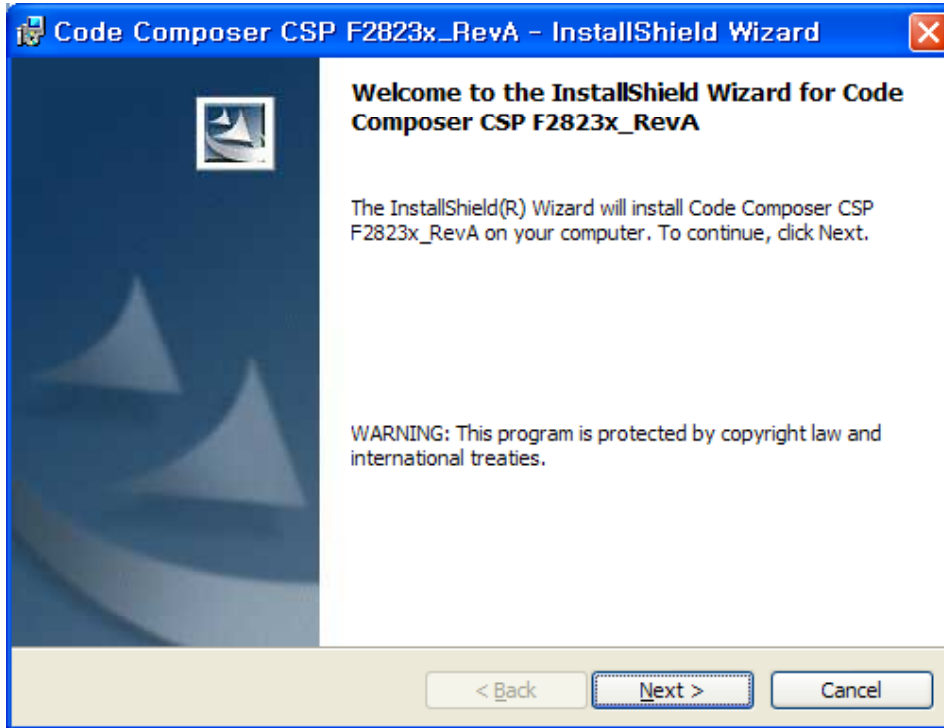
* CCS3.3 업그레이드(CCS V3.3 Service Release x.x.xx.xx.x)

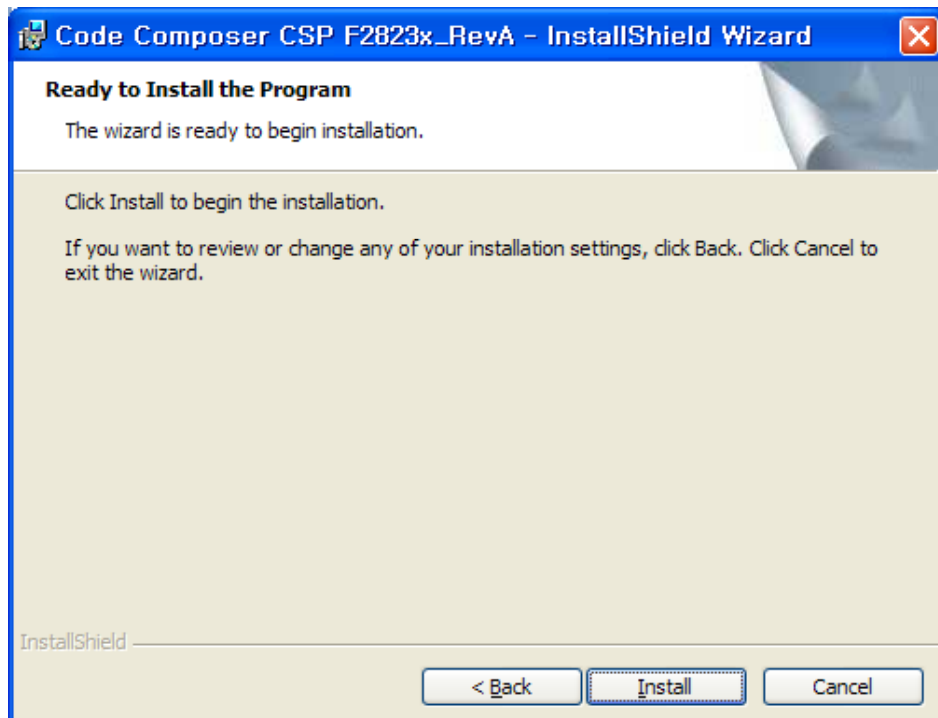
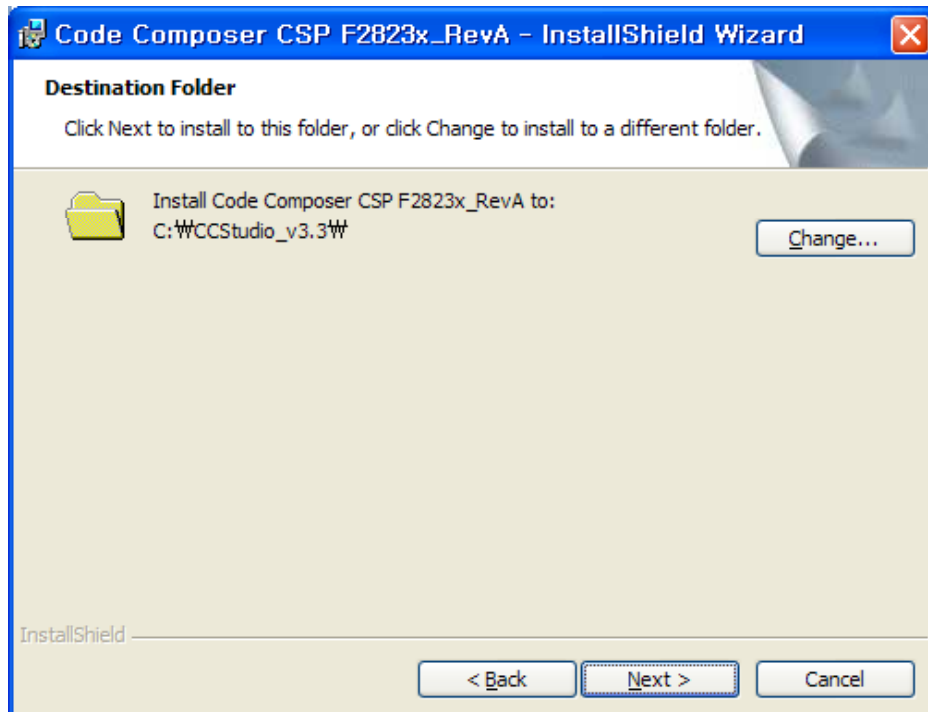
1. 사이트에서 최신 업그레이드 버전을 받아 설치한다.(설치후 재부팅 권장)



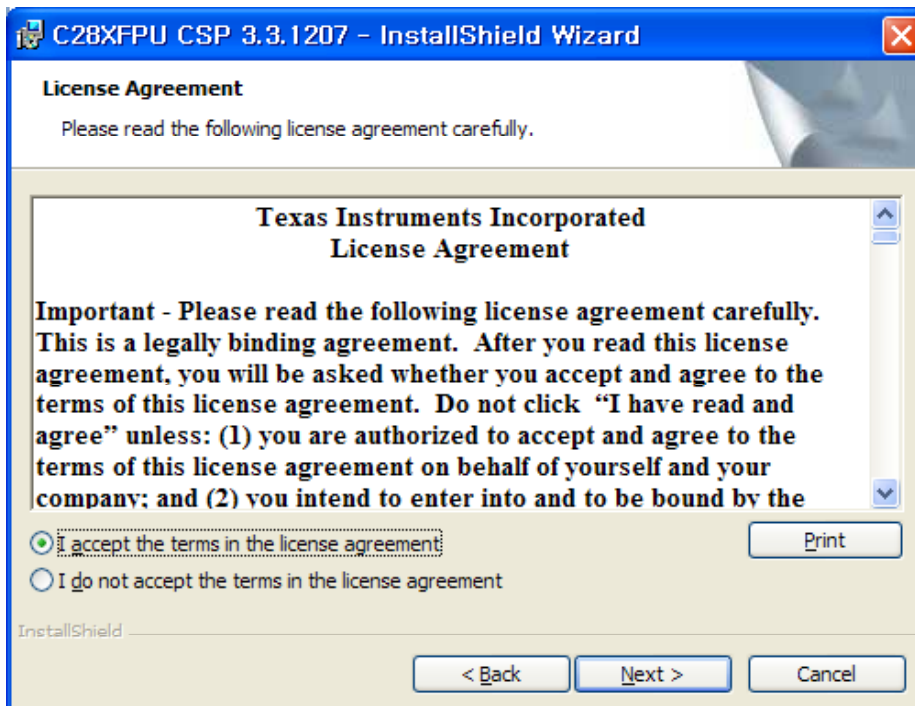


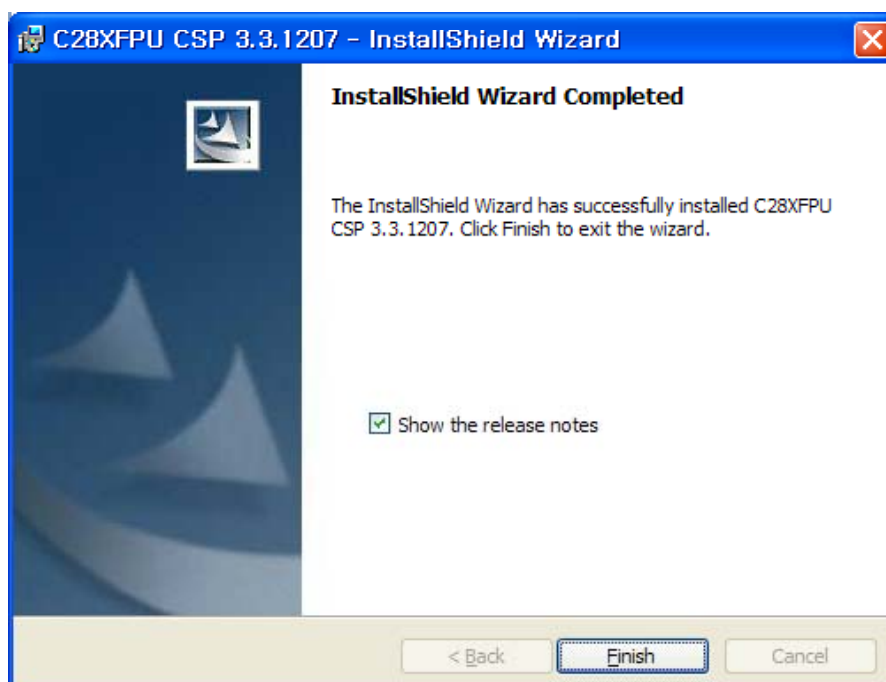
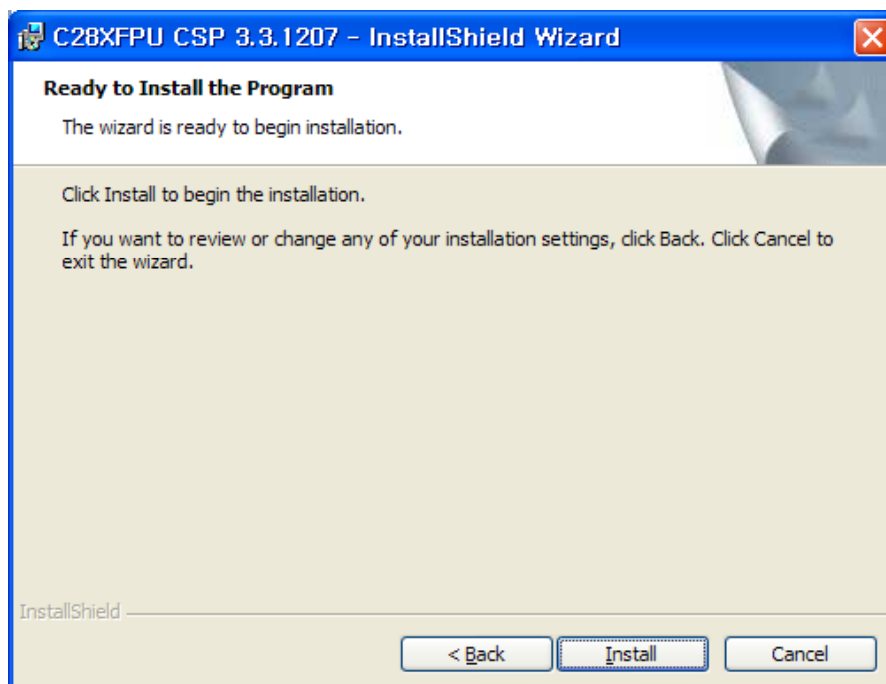
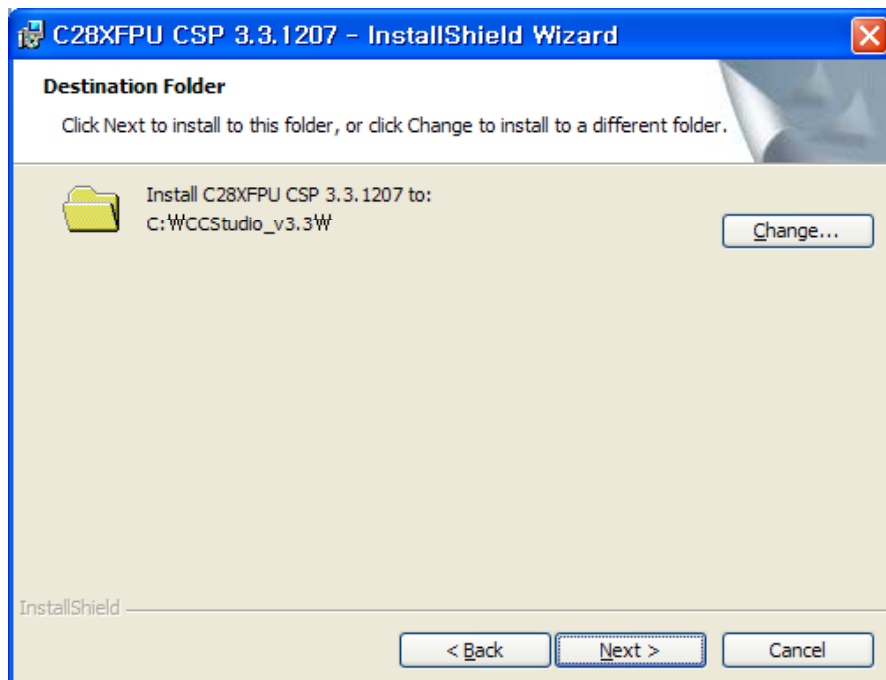
* CCS3.3 Chip Support 업그레이드(F2823x RevA)



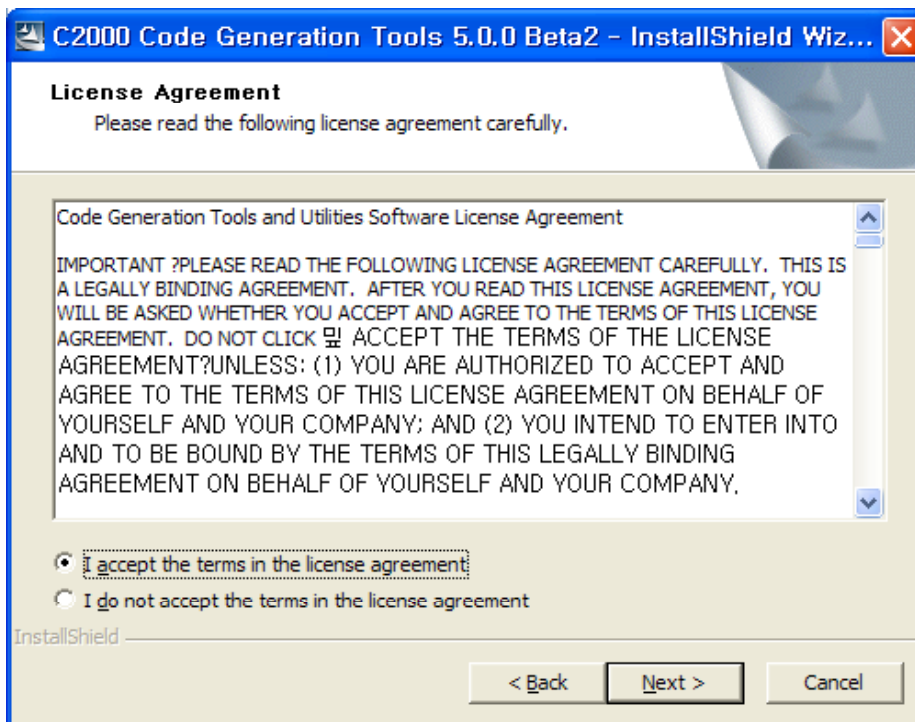
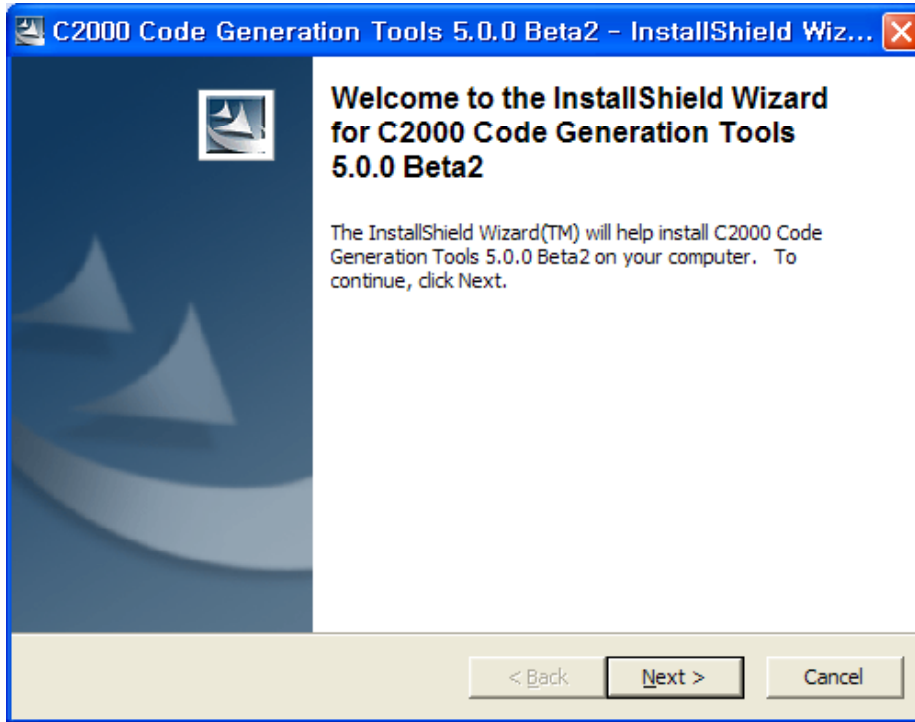


* CCS3.3 업그레이드(setup_C28XFPU_CSP)





* C2000 Run-Time Library(C2000 CG Toos)



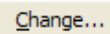
Location to Save Files

Where would you like to save your files?

Please enter the folder where you want these files saved. If the folder does not exist, it will be created for you. To continue, click Next.

Save files in folder:

C:\Program Files\C2000 Code Generation Tools 5.0.0 Beta2

Change...

InstallShield

< Back

Next >

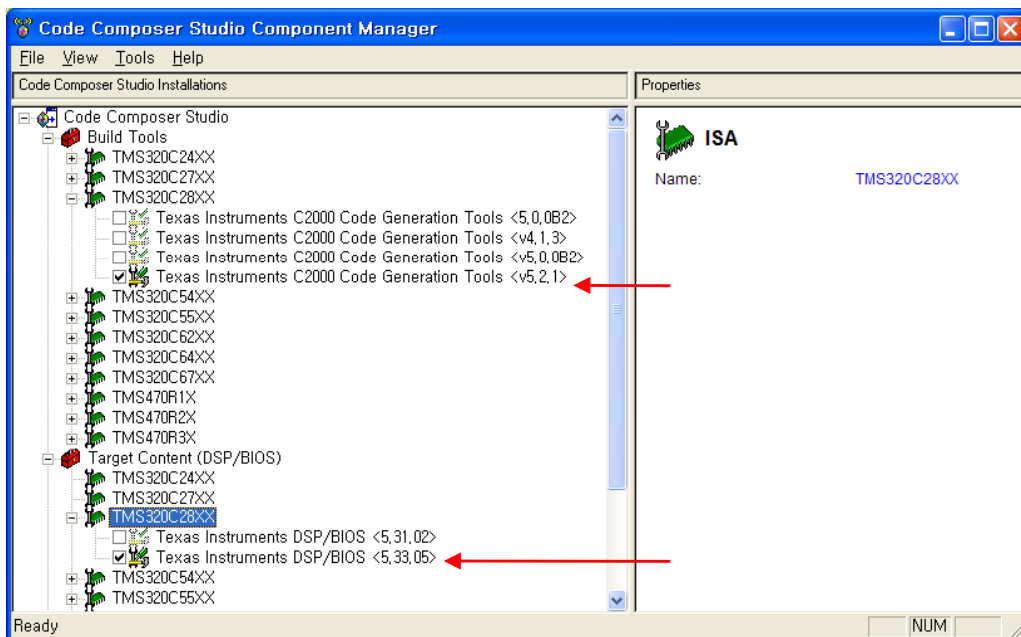
Cancel

* CCS 설치 완료후 환경 설정 하기

1. Component Manager을 실행 합니다.

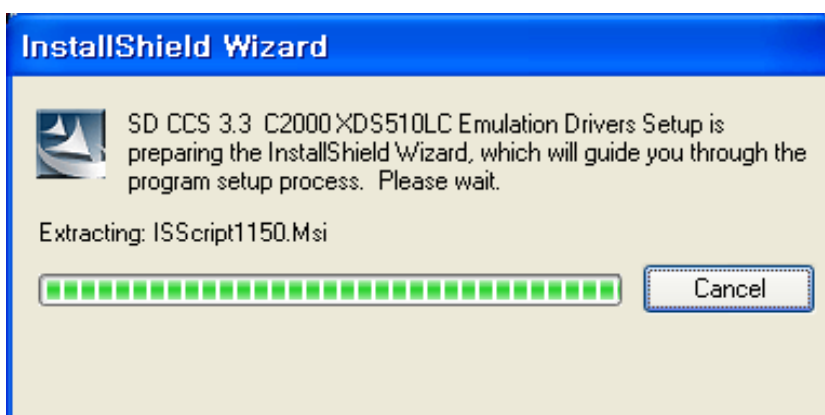
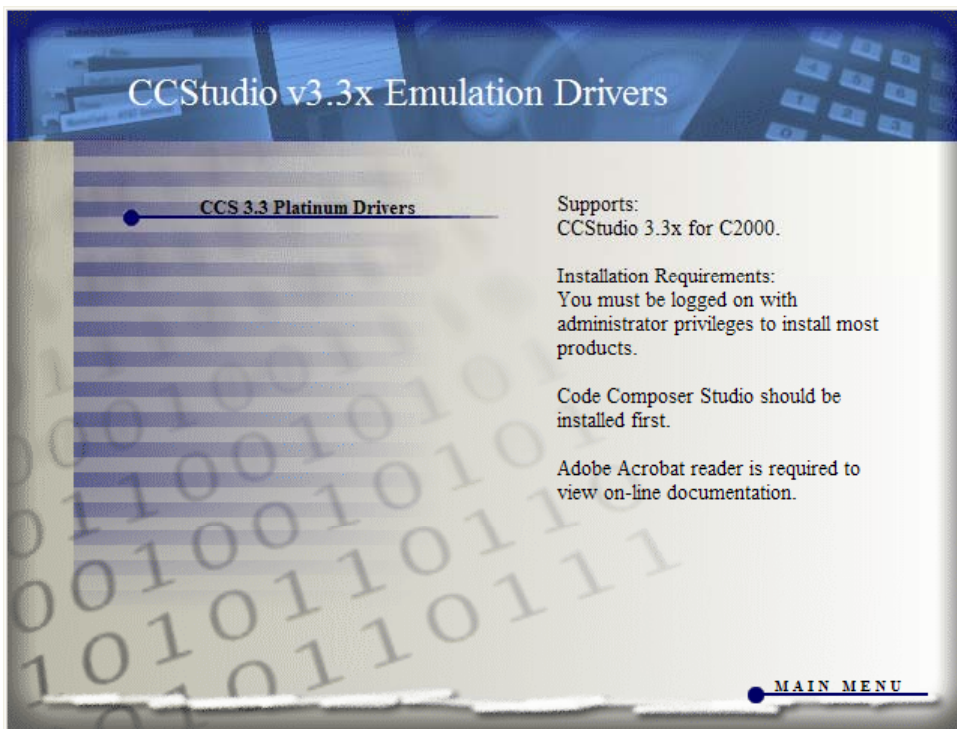


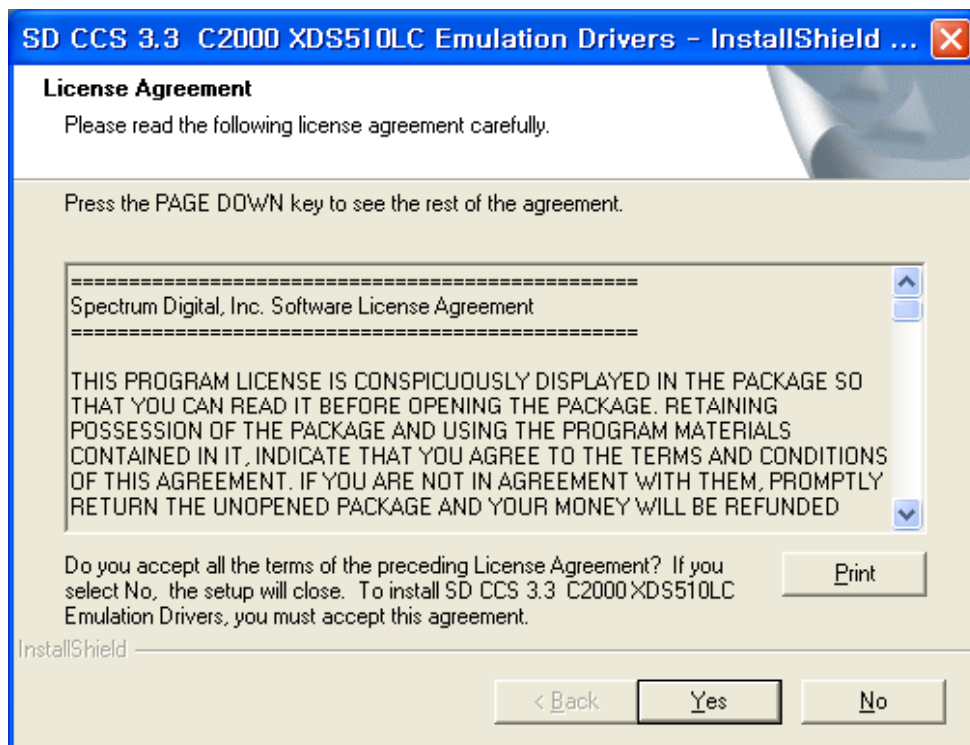
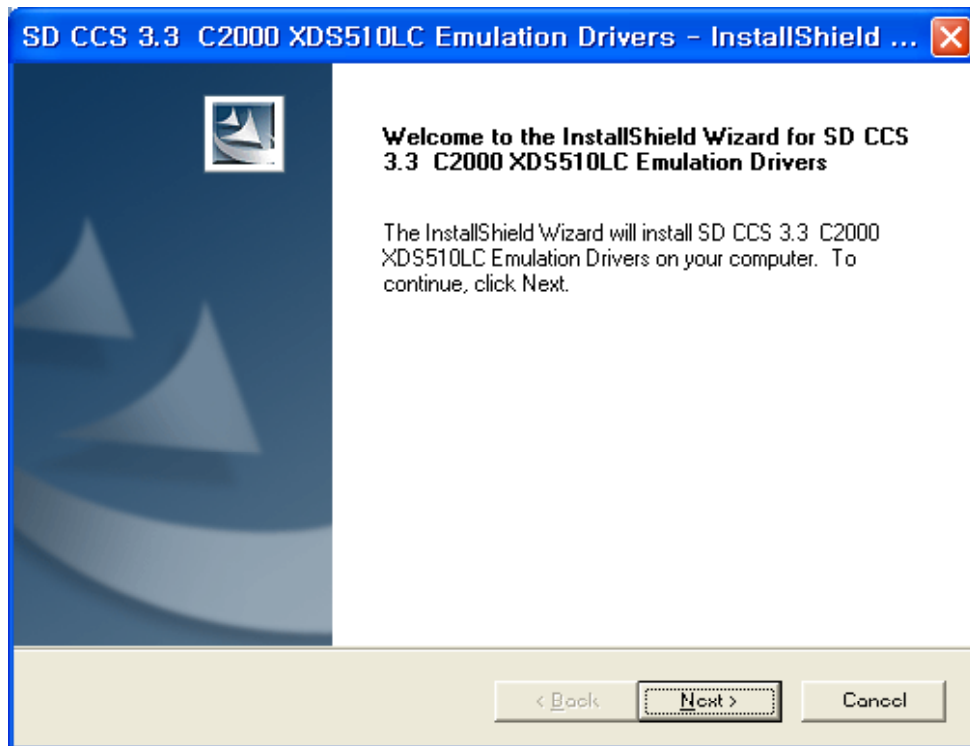
2. 아래와 같이 Build Toos와 DSP/BIOS 항목중 TMS320C28XX를 최신 버전으로 설정 합니다.

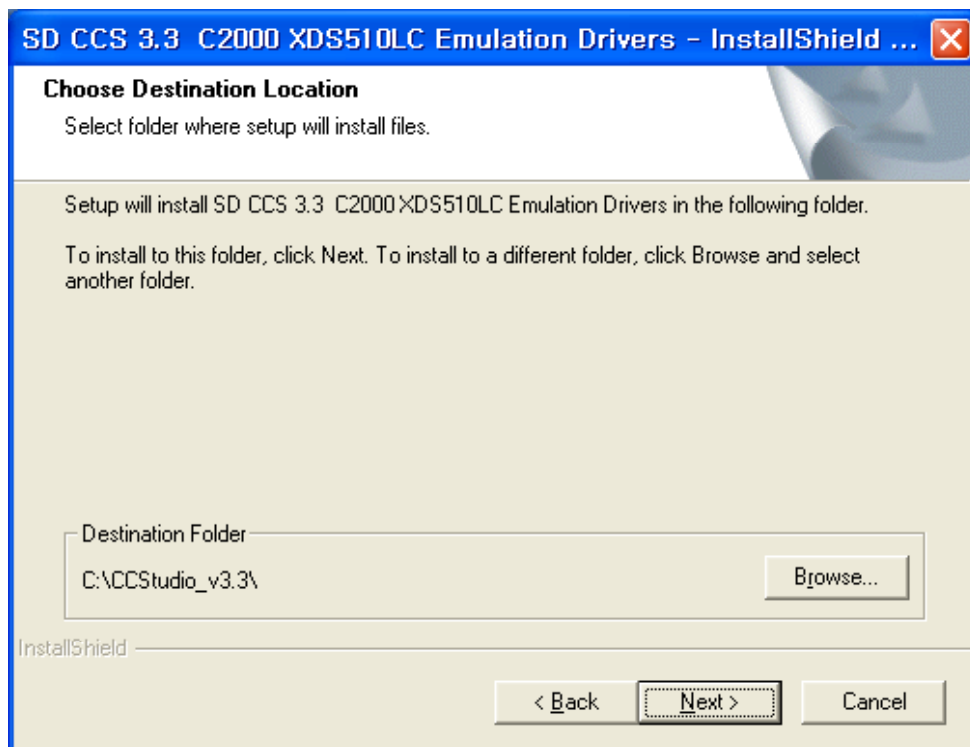
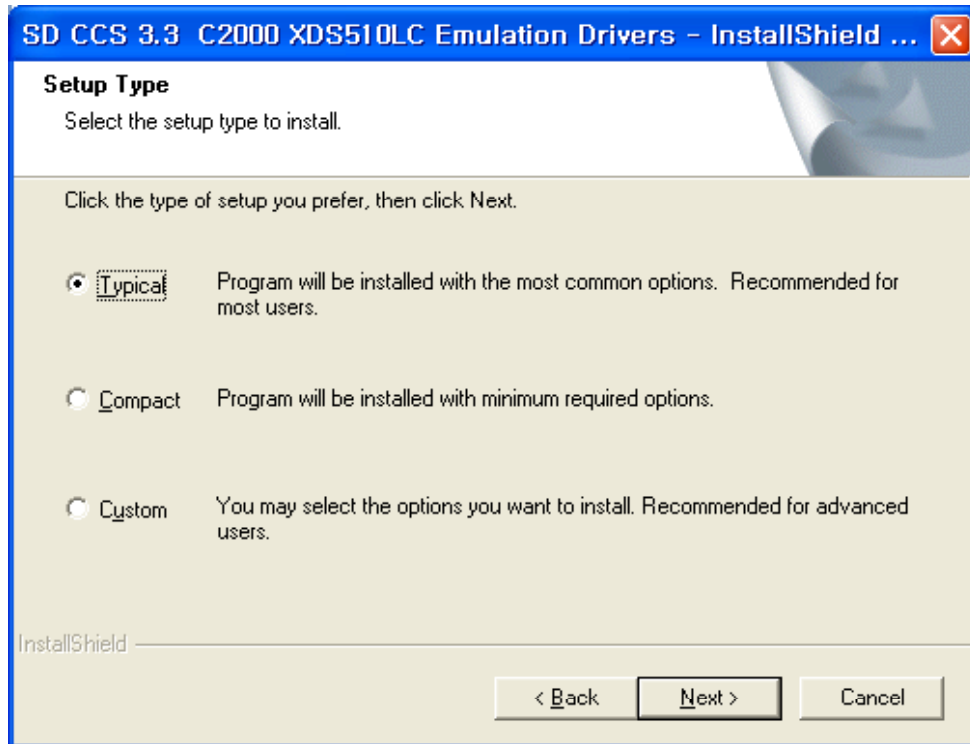


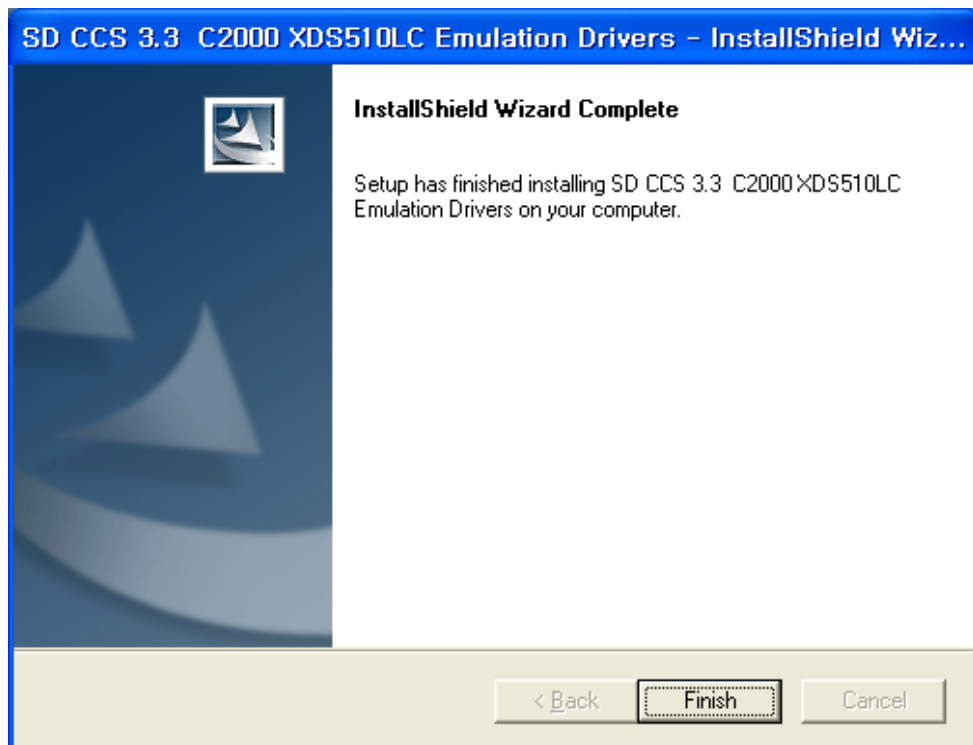
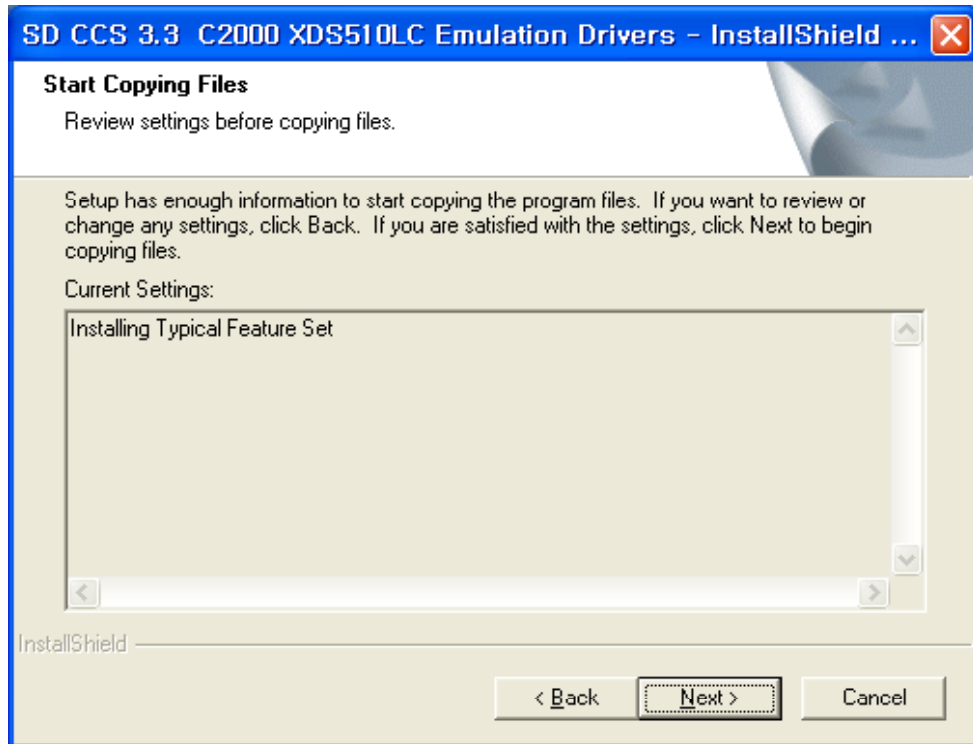
* C2000 XDS510LC Emulation Drivers Utility 및 드라이버 설치

1. 제공받은 CD를 실행후 아래와 같이 순서대로 설치 합니다.

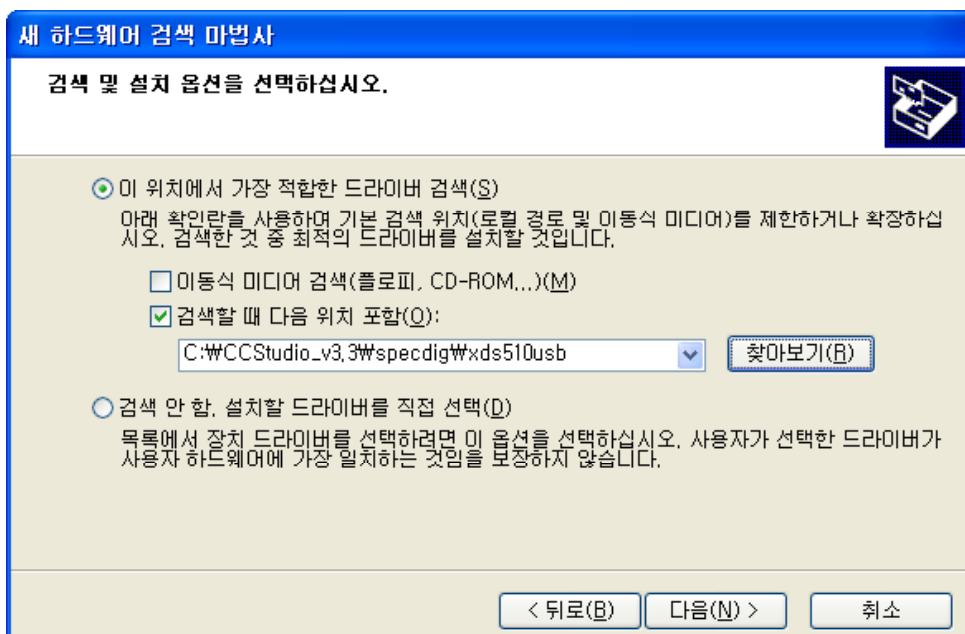
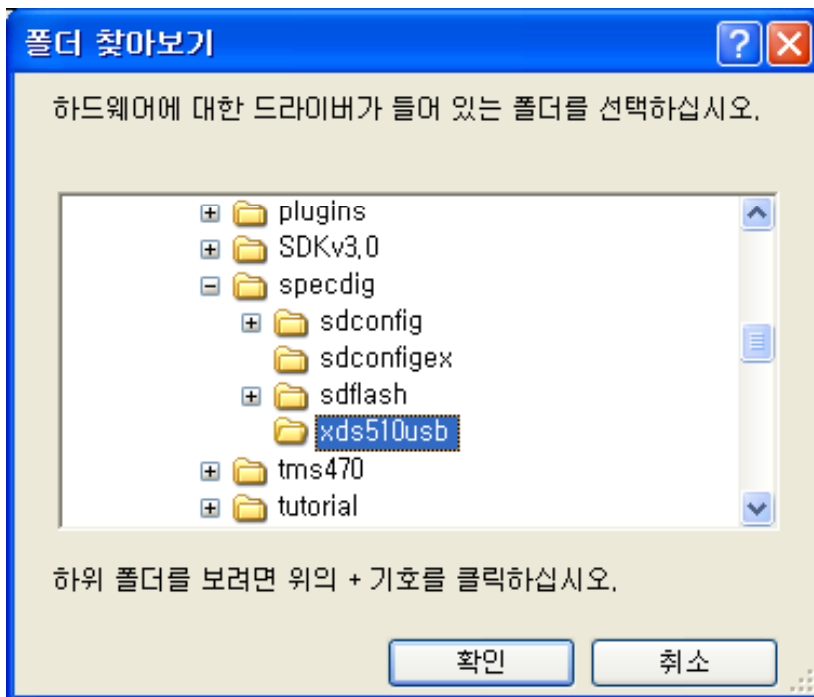
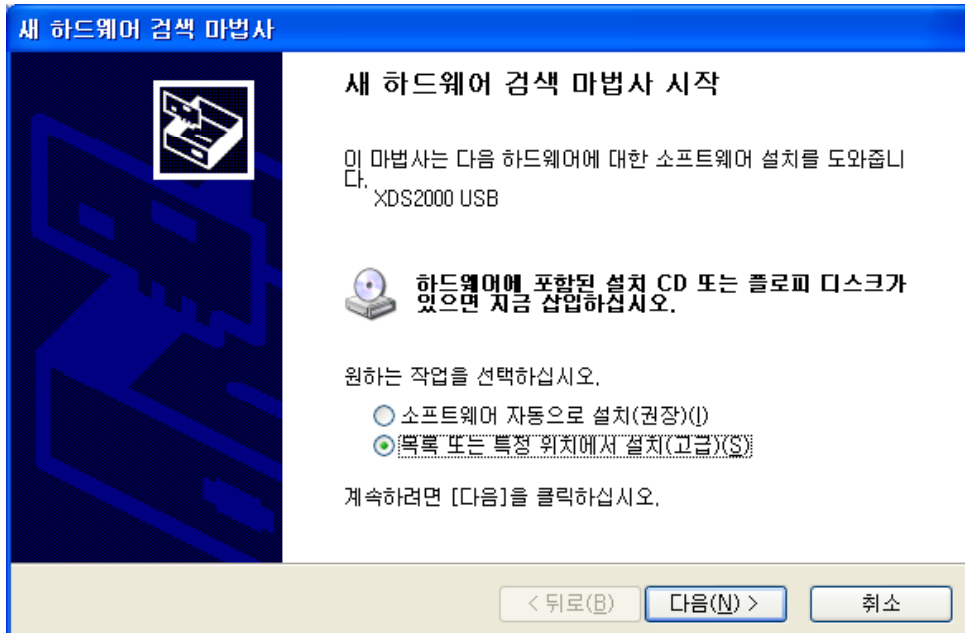


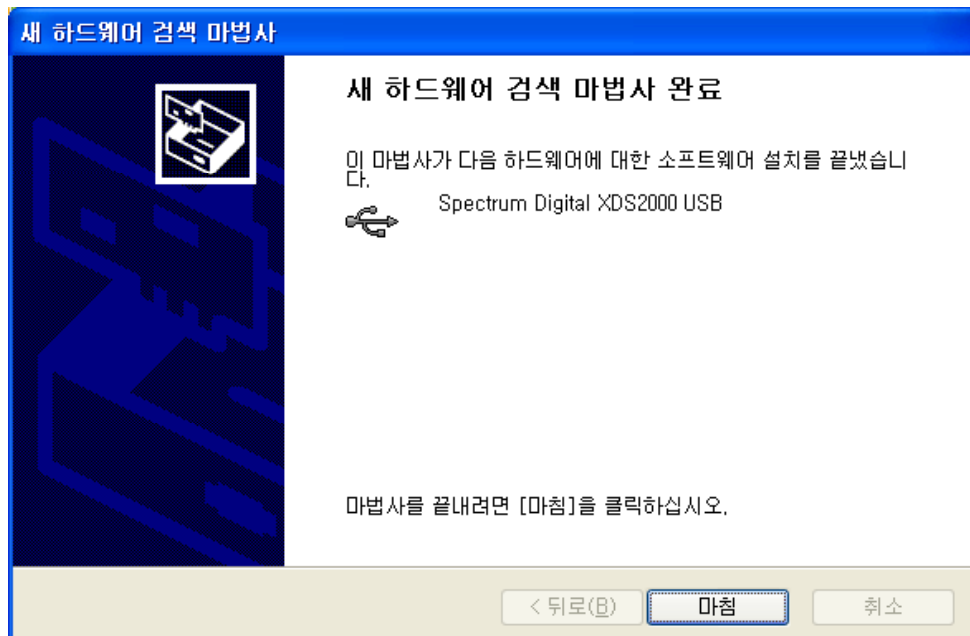






1. 장치를 연결후 아래와 같이 드라이버를 설치 합니다.

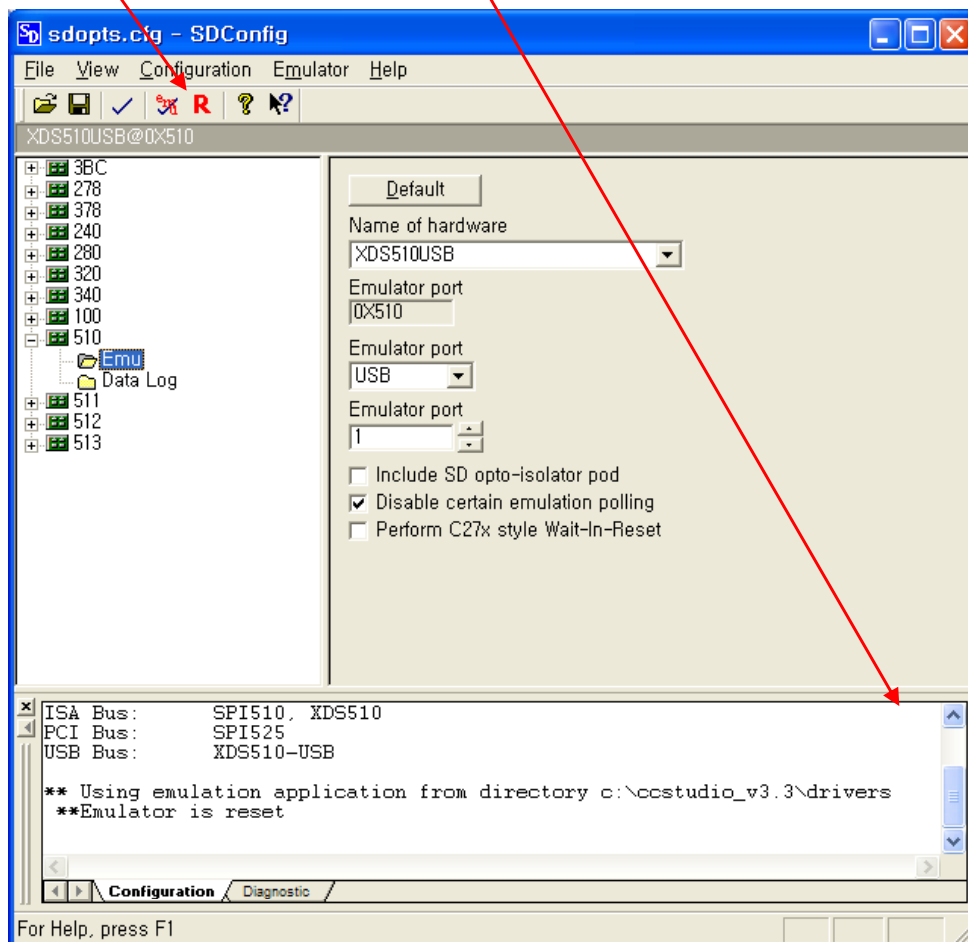




2. XDS510LC(JTAG장치) 와 보드를 연결 후 아래와 같이 진행 합니다.



- Emulation Reset 버튼을 클릭후 메시지 창을 확인 합니다.



- Emulation Test 버튼을 클릭후 메시지 창을 확인 합니다.

